



ThePulse

Opportunity, Diversity & Success For All

Maiden Erleigh School | 81 Crescent Road | Reading RG31 5SL | T. 0118 966 8065 | www.maidenerleghschoolreading.co.uk | @MESReading

FROM THE HEADTEACHER

Welcome to the latest edition of The Pulse.

This term started with a bang for our Year 10 students as they sat their "Pre Public Examinations". This gave our students a very realistic experience of the final examinations season which is now only 15 months away. I was impressed by the diligence of many of the students and the seriousness of attitude and approach that they took to these examinations. All the PPEs have now been marked and are being used by staff to give very focused feedback and development pointers to students. Some students will be very encouraged by their PPE results, others may be disappointed and can use this as an opportunity to develop and improve their approach to examination preparation and revision. We are looking forward to continuing to support our year 10s over the coming months as they move towards their final exams.

This half-term also saw us host our highly successful "Think Ahead" day. Each year group had a specific programme linked to future choices and options or developing useful study skills and approaches. Staff and students worked very hard to make the day a great success (more on this later in the Pulse). This is but one example of our determination to create a positive environment where all students make progress, enjoy their experience of school and feel supported.

Finally, we had to close the school for one day due to the snow and ice. This decision is never taken lightly but is a response to a Risk Assessment relating to the safety of the site and the ability to get staff in to provide enough supervision for our students. Thank you for your support in this decision. Hopefully spring is around the corner!



CALENDAR

18 Feb - 22 Feb	Half Term
28 February	Year 8 Progress Meeting World Book Day
4 - 8 March	Tirabad
20 March	Cambridge Theatre: Matilda The Musical
6 - 14 April	Ski Trip: Sestriere, Italy

HOUSE POINT TOTALS

Griffin	Triton	Phoenix
22,435	24,925	22,152

D	DETERMINATION IN ALL WE DO
R	RESPECT FOR OTHERS
E	EXCELLENCE IN OUR WORK
A	ATTITUDE FOR SUCCESS
M	MATURITY IN OUR CHOICES

Design and Technology House Competition

At the beginning of this term the Design and Technology House Competition was launched. The competition was open to all year groups and the launch meeting was well attended. Students were invited to design and make an original product that would fit inside a tin. The brief was very open and the students could use any materials and processes that they wanted.

As we go to press, the competition is still being judged and the winners will be announced on the last day of term. The

standard of entries is very high with a range of original ideas from a chess set, to a mobile phone holder, an origami kit and a kit of toiletries for visitors.

The winners will not only receive house points, but will be entered for the national 'product in a tin' competition later in the year.

Thanks to all those who entered and for producing design work of such a high standard.

Mr Bradley





Year 8 and 9 action science project

Last term, year 8 and 9 students engaged in a collaborative problem-solving project in science. The aim of the project was to motivate the students to make positive decisions about their lives and communities through research informed actions, relating to socio-scientific issues (e.g. the use of genetic technology, consumption of fast food, etc) and produce outcomes to inform the wider community. Most of the students chose to educate peers and raise awareness by making posters, leaflets and videos. Furthermore, we organised a poster presentation event, by inviting teachers to visit our classroom with their students. During the poster presentation, the students set their stations around the classroom and presented simultaneously as our guests floated around asking questions. They explained the controversies of their socio-scientific

issue, described their conclusions and proposals for the future, gave out leaflets and discussed their views. Our guests were impressed by the students' ability "to stand their ground", present and debate effectively.

Mr Tsoumparis



Onatti Theatre Company



This year, on Monday the 28th of January, the department of Modern Foreign Languages invited the Onatti Theatre Company to Maiden Erlegh School in Reading, to perform to our French linguists in Years 8 and 10. "La Salle des Énigmes" was a humorous and visual play about two teenagers who are given a series of Tutankhamun-themed puzzles and clues to unlock a room. The play was performed by two native French actors and was aimed at intermediate students aged 13-16 who are learning French. C'était fantastique!

A special thanks goes to all members of staff who supported the event. An even greater thanks goes to the students who volunteered during the play. Merci.

Here are some of the feedback from students:

I think it was interesting from a French perspective as we got to see a proper French conversation.

I enjoyed it but I think they should speak slower so I can understand more.

I would recommend it to a friend that studies French otherwise it would be too confusing.

It was funny at the bit where students were judging.

It was funny, sometimes confusing however, the music fitted in with the theme. I would recommend it because it was interactive.

It was weird but I understood it. I would recommend it to a friend.

Year 9

As a year group we have started the year with great enthusiasm, spirit and positivity.

We ended 2018 with many of the group getting awards in the awards assembly. This was a chance for us to celebrate how amazing we are and I was bursting with pride!

The next 3 years are very important. As a year group we continue to have high expectations and to strive for the best behaviour for learning. We know that as a team we can work together to ensure that learning is our number 1 priority.

2019 brings us new challenges, new aspirations and a new focus.

This term I am having a real focus on attendance and punctuality. Did you know that every minute counts? Being in school and getting to lessons on time will make a difference to your end results. As a year group we need to ensure we are maximising our learning to the full and embracing all learning opportunities.

I am looking forward to what 2019 brings us.

Miss Hancock



"INFORMATION AND EMPOWERMENT" PARENT CONFERENCES

These events are open to Parents/Guardians of students attending Bulmershe School, Waingels College, Maiden Erlegh School and Maiden Erlegh School in Reading.

4 March 2019 7.30 – 8.45 pm
Maiden Erlegh School, Silverdale Road, RG6 7HS

'Drug abuse and addiction is not a spectator sport- eventually the whole family gets to play'.

Presented by **Elizabeth Burton-Phillips MBE**, Founder of DrugFAM www.drugfam.co.uk and author of "Mum, can You Lend Me Twenty Quid? What drugs did to my family".

To book a place at this event please email parentconference@maidenerleghschool.co.uk

20 March 2019 7.30 – 8.45 pm
Waingels College, Waingels Rd, Woodley, RG5 4RF

'Exploitation (County Lines, sexting, on-line grooming).

Presented by **Christina Berenger**, Detective Chief Inspector, PVP Berkshire, Thames Valley Police.

To book a place at this event please email parentconference@waingels.wokingham.sch.uk

1 April 2019 7.30 – 8.45 pm
The Bulmershe School, Woodlands Avenue, Woodley, RG5 3EU

'Online Safety –understanding the virtual world that your children live in?

Presented by: **Andrew Westfold** Information Development, McAfee, Corporate Product Documentation.

To book a place at this event please email parentconference@bulmershe.wokingham.sch.uk

Also attending will be representatives from:

- **Just Around the Corner (JAC)** - www.jacoutreach.org
- **SAFE Project**
- **Smart** <https://smartcjs.org.uk/>
- **Thames Valley Police Wokingham Neighbourhood Team**
- **Wokingham Safeguarding Children**
- **Youth Offending Service**



MAIDEN ERLEGH
SCHOOL IN READING



MAIDEN ERLEGH
SCHOOL



The Bulmershe
School
INSPIRING POTENTIAL.
ACHIEVING TOGETHER.



WAINGELS
College

Places are limited to 2 per family and will be issued on a first come first served basis.

What is this artefact?

This is a detail of a medieval painting of the Virgin Mary and Jesus from a medieval rood screen from St Mary's church, Great Snoring, Norfolk.



As you can quite clearly see the painting has been heavily defaced at the time of the English Reformation where religious images like these across England were defaced and destroyed by Protestants who were protesting against the excesses of the Roman Catholic Church and the worship of such icons. The English Reformation had a huge impact on the country, a legacy that we are still living with today.

The Abbey of Reading which dominated the town throughout the Medieval period was confiscated by Henry VIII, its monks thrown out and its riches plundered, in particular the building materials such as stone, lead and timber from the roof and the glass from the windows. In fact there are many buildings in Reading, such as St. Mary's church, that were rebuilt using these materials. The abbey itself is nothing more than an inaccessible ruin.

Want to find out more?

Check out the galleries in Reading Museum where excavated medieval architectural remains are displayed together with other artefacts that relate to daily life of the monks of Reading.

What is this ARTEFACT?

Now it's time to introduce our third mystery artefact in our **What is the artefact series.**



Any ideas?

All will be revealed in our next issue of the Pulse.



16.05.19

THE BUILT ENVIRONMENT OF THE FUTURE

University College of Estate Management

requests the pleasure of your Year 9 and 10 students at an outreach event
as we celebrate our **100th anniversary** and look to
The Built Environment of the Future.

Introduced by **Mayor Rokhsana Fiaz**, please join our panel of industry insiders,
innovators and senior executives as they inspire your students to
consider a career within the Built Environment

on **Thursday 16 May 2019**

from **10am - 2.45pm**

at **The Crystal, London**

'What is Surveying and what opportunities can it bring in the future?'

is designed to inspire the students to consider a career in surveying. Presenting an opportunity for students to engage with top employers, this session will feature three short talks delivered by industry leading professionals, followed by an audience Q&A and panel discussion.

During this session, we will be attempting to set a Guinness World Record for the largest surveying lesson. In the run up to the event, we will run a national competition in schools, with the winning school announced live during the session.

With

Sherin Aminossehe | Head of Offices | Lendlease

Jessica Austin | Apprentice Surveyor | CBRE

Jesse Meek | Head of Property Asset Management | Sovereign Housing Association

'What does sustainability mean to the future of the Built Environment?'

is designed to inspire the students to consider the ways in which sustainability initiatives will affect our land, property and construction in the future.

With

Craig Bennett | CEO | Friends of the Earth

Ben Bolgar | Senior Director | The Prince's Foundation

Louise Ellison | Head of Sustainability | Hammerson

The content of both sessions will be closely aligned with the National Curriculum and several Gatsby Benchmarks, as well as being highly interactive.

Event outline

10am | **Registration & welcome refreshments** | The Street

11am | **What is Surveying and what opportunities can it bring in the future?** | Auditorium

12.45pm | **Lunch break**

Students will have the opportunity to explore the world's largest exhibition on sustainable cities, housed at the Crystal.

1.45pm | **What does sustainability mean to the future of the Built Environment?** | Auditorium

2.45pm | **Delegate departure**

This event is free to attend.

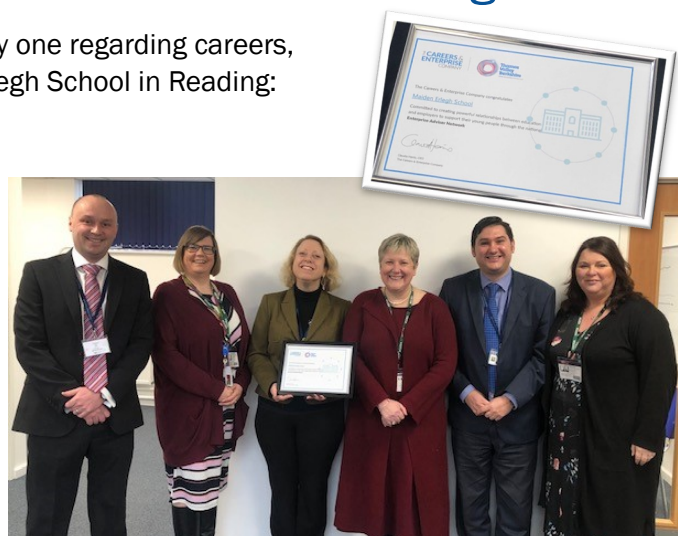
[Register your attendance here](#)

Careers, Work Experience and Work Related Learning:

The first half-term of 2019 has proven to be another busy one regarding careers, work experience and work-related learning at Maiden Erlegh School in Reading:

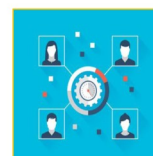
Careers and Enterprise Award

We are proud to announce that on Thursday 31 January, Maiden Erlegh School in Earley was presented with an award from The Careers and Enterprise Company. Katherine Horler OBE (Chief Executive of Adviza and one of the Local Enterprise Partnership Executive Board of Directors) congratulated the school on their commitment to creating powerful relationships between education and employers to support young people through the national Enterprise Adviser Network. We are one of only three schools in the country to receive this award and we are very proud of this achievement. This work also extends to the Careers Programme across our Trust schools.



Maiden Erlegh School Careers Programme – Case Study

We are pleased to share with you a case study about the Maiden Erlegh School Careers Programme written by Thames Valley Berkshire Advisor Network. We were chosen as an exemplar of best practice and the information will be published nationally. We are proud that our hard work has been recognised and that our Careers Programme is having a significant positive impact upon the future destination choices of our students. As you will be aware, our Trust Careers Programme encompasses Maiden Erlegh in Reading so all students within our Trust receive the same careers provision.



CASE STUDY

Maiden Erlegh is a secondary school in Wokingham, Berkshire. It joined the Enterprise Adviser Network in 2016.

80% of Maiden Erlegh's students go onto university, but increasingly students are looking at alternatives such as apprenticeships. The school has reached several milestones in the Enterprise Adviser Network (EAN) programme including Senior Leadership endorsement of the programme, and appointing a Careers Lead from within the school to ensure that students are provided with an array of opportunities and a comprehensive careers programme that focuses on improving future employability opportunities.

Preparing the future workforce

Maiden Erlegh's strategy is to prepare students for the future workforce and for jobs that may not exist yet. This is executed through a comprehensive yet stimulating careers timetable which includes:

- work experience
- work-related learning
- STEAM provision

The school's annual Careers Fair is hugely successful with over 90 representatives from Higher Education, Apprenticeship Providers and businesses in attendance in 2018. Also, over 650 students have attended one or more careers seminars that were offered, such as 'A career in Cyber Security/Fraud' and 'A career in Construction/Architecture and Quantity Surveying'.

Businesses also supported more practical and curriculum focused activities with Thales, Rapid7 and Kier Construction delivering events for students from all year groups, including a Lego Mindstorm Challenge; People Like Me event for girls; and STEAM days.

Integrating apprenticeships into the careers programme

Making students aware of the different pathways post sixth form is important for the school. To support this ASK (The Apprenticeship Support and Knowledge Company) has worked with Maiden Erlegh to raise the profile of apprenticeships as a viable option for them. ASK has:

- delivered apprenticeship assemblies for students,
- hosted an apprenticeship information evening for parents, and

- delivered Continuing Professional Development opportunities which focus on apprenticeships to staff in school.

Getting students work ready

Work experience is an important feature of the careers programme at Maiden Erlegh. Year 13 students receive advice and guidance relating to university applications, and writing strong personal statements, as well as support with apprenticeships; writing CVs; completing application forms; participating in interviews; and becoming work ready through strengthening employability skills. The students also complete a 30-hour placement that is directly linked to their career aspirations. Students in Year 11 receive a bespoke careers interview to help them to make informed decisions after GCSEs.

Maiden Erlegh is keen to continually improve their careers programme and as part of this have looked at how best to engage students. They have recruited student representatives from across the school to take on the role of Careers Ambassadors, to ensure that the student voice is heard with regards to plans for future career activities.

An award winning programme

Maiden Erlegh has received high recognition for its careers programme. It has been awarded with the Careers & Enterprise Company Certificate for its success in taking part in the national programme that bridges the gap between education and employers. The school also won Most Innovative Education-based Apprenticeship Promotion Initiative award at The Berkshire Apprenticeship Awards 2018.



Contact us thamesvalleyberkshire.co.uk/enterprise-adviser-network.htm
Follow us on Twitter & Facebook @Berkshire EAN

Thames Valley Berkshire Enterprise Adviser Network: Maiden Erlegh Case Study

Careers, Work Experience and Work Related Learning *continued*:

Year 10 Think Ahead Day

On Wednesday 16 January students in Year 10 participated in a Think Ahead Day specifically looking at careers and the world of work. Students started the day by participating in six workshops specifically designed to prepare students for their forthcoming work experience placements in June. Representatives from Learning to Work and business volunteers delivered sessions including the importance of first impressions and dressing to impress, health and safety in the workplace, interview techniques, working with people and customer service. In the afternoon, students took part in a Curriculum Vitae workshop, supported by representatives from NG Bailey, and started to explore the Start u-explore Trust Careers software (more details to follow). Year 10 students behaved in a mature, business-like manner which was very impressive and the feedback we received from our guests was overwhelmingly positive.

Year 8 Lego Mindstorm EV3 Challenge

On Thursday 31 January students from Year 8 participated in a Lego Mindstorm EV3 Challenge, delivered by Thales (one of our STEAM partners). The challenge was designed to engage and enthuse students with a particular interest in STEAM (Science, Technology, Engineering, Art and Mathematics) and Computer Science. Lego Mindstorms EV3 makes building, programming and commanding LEGO robots smarter, faster, and engaging for students. The challenge was also designed to inspire future careers in STEAM and Computer Science. Students thoroughly enjoyed taking part and engaging with engineers, apprentices and degree graduates from Thales.

Year 9 People Like Me Sessions

On Friday 1 March girls from Year 9 will be participating in the People Like Me event, delivered by Thales (one of our STEAM partners). This session uses girls' natural tendency to create and articulate their self-identity, with adjectives to help them see themselves working happily and successfully in Science, Technology, Art, Engineering or Mathematics (STEAM) and forms part of the Maiden Erlegh Trust STEAM enrichment programme. Labour market information regularly highlights the low numbers of females entering such professions. Girls will be able to engage with female engineers from a variety of different backgrounds and ask careers-related questions so they feel empowered to make decisions about their future destinations.



Forthcoming Events:

National Apprenticeship Week	Monday 4 – Friday 8 March 2019
Year 10 Apprenticeship assembly	Friday 15 March 2019



Trust Careers Fair 2019

On Tuesday 5 February we hosted our biggest and best Careers Fair to date at Maiden Erlegh School. We were able to offer over 80 representatives attending from the world of work, colleges, universities and apprenticeship providers. The evening gave young people an opportunity to think through their future destination choices and the ability to talk directly to representatives from a huge number of different fields. Nearly 600 parents and students attended from our Trust secondary schools and the feedback we have received from parents, students and representatives has been overwhelmingly positive. We would like to thank all those involved in organising such a successful careers event.

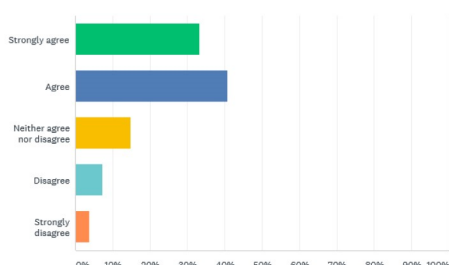


Sims Parent/Parent App Survey

You said

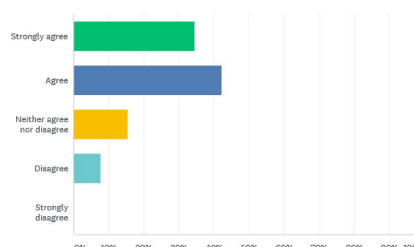
I have found it very easy to set up and use the Sims Parent App

Answered: 27 Skipped: 0



I have found the information provided in my child's report helpful and informative

Answered: 26 Skipped: 1



Many thanks to the parents who completed our Parent App survey. The graphs above show the summary results from the first two questions and as you can see, the App has been very well received. The majority of parents have found it easy to use and indicated that it has provided very simple access to helpful information.

You said	We did
The conduct and behaviour windows were too vague	The App gives summary information only. Currently staff ask students to record why they have been awarded recognition points in their diaries. We are now looking into including more detail on the App.
The supportive appointments for students should not flag as red	We have raised this issue with our service provider as a change request. At present we have ensured all supportive interventions show as zero points in contrast to sanctions or detentions.

Examples

<p>Tuesday 18th December 2018</p> <p>+2 Recognition Point - 2 points Made a great start to the Basketball season</p>	When recognition points are awarded we are exploring the possibility of staff recording brief details giving the reason.
<p>Wednesday 7th November 2018</p> <p>-0 Appointment for Revision</p>	In contrast to a detention for poor behaviour or lack of homework supportive interventions flag with zero points.

If you haven't already used the App we would urge you to give it a go. You can access a wealth of information about your child including their attendance, achievement, timetable, conduct and assessment data. You can also amend the contact information and medical information concerning your child. For further information, support or if you wish to start using the App please contact parentapp@maidenerleghschool.co.uk



Think Ahead Day January 2019

On 16th January, normal lessons were suspended and the whole school took part in activities to help prepare for the future. Year 7 had a Maths Puzzle Day to help develop thinking and problem-solving skills. Year 8 had an options taster lesson to help them choose their GCSE subjects for next year. Year 9 worked on study skills, essential now they have started their GCSE courses, and volunteers came in to help year 10 students prepare for the world of work by

talking about how to handle interviews, how to 'dress to impress', how to write CVs and letters of application, health and safety concerns at work and how to provide customer service. The day was very popular with many of our students who particularly enjoyed learning how to dress appropriately for work (year 10), Mine Field (year 7), and how to do online research (year 9). We are very grateful to the volunteers who generously gave up their time to help with the day. Year 10

wrote to the organiser of the volunteers who said, about the packet of letters she received: "We received the thank you letters from your students. It was the best reading I have had ever and brought a tear to my eye. It makes all the efforts worth the while! I have forwarded them to our volunteers. Please pass on our biggest 'thank yous' to your wonderful students!"

Mrs Escott-New



Safeguarding

Safeguarding in schools is an ever growing demand, and something that Maiden Erlegh School in Reading takes very seriously. I wanted to make you aware of the support available at the school for your son/ daughter, and also provide you with useful websites that you can access, signposting you to agencies, and information to support all members of the family.

Support available at School

We have a variety of support available within school, please find below an outline of the services and support we provide:

SENDCO – Special Educational Needs and Disabilities Coordinator

Mrs Clarke is responsible for ensuring all children who fall under this category get the support they need. This ranges from Access Assessments for public examinations, to supporting children with a whole range of learning difficulties.

Inclusion Team

Mrs Wills, Mrs Teale and Mrs Batts make up the inclusion team. This is a safe central area of the school pupils can visit or be referred to for a variety of reasons. This may include concerns regarding behaviour, safeguarding, friendships, family worries. Inclusion provides a safe place to study if things have become a little difficult for the young person to cope with.

School Counsellor

Thalia Leadbitter is a fully qualified counsellor with years of experience working for ARC charity. We are fortunate to now have Thalia working full time for Maiden Erlegh Trust. Referrals can be made to Thalia, and students will be seen once a week for a period of time decided by Thalia, given the young person's needs.

Brief BA

Brief BA is a programme run by Reading University. They are therapists trained in supporting young people with low moods and depression. The therapists do a full assessment of the young person, with parental consent and information given. This therapy is based on Cognitive Behaviour Therapy, and aims to give the young person tools to help themselves moving forwards.

Should you require further information on any of the above services, please contact your child's **Head of Year**.

Should you require external support there are a number of website that may be useful to you:

Reading Services Guide – This covers all agencies and services available in all categories to all members of the family.
<http://servicesguide.reading.gov.uk/kb5/reading/directory/home.page>

No.5 Free Counselling service – You can contact no.5 for free counselling sessions for young people
<http://no5.org.uk/>

National Online Safety - With the growing concerns regarding internet usage, grooming, and social media this is a great website for find out more information, and even take part in free online training.
<https://nationalonlinesafety.com/>



Kendrick School
Ms Helen Stacey
0118 9015859



Reading Girls' School
Miss Kimika Gardner
0118 9861336

Support for Parents/Carers of Secondary Students in Reading

The Reading Young Peoples' Emotional Wellbeing Partnership is delighted to offer a series of opportunities for parents/carers to find out more about a range of difficulties that young people may be facing, and how they can best support their child. The team of Educational Psychologists and Primary Mental Health Workers who work closely with school staff to improve outcomes for young people across Reading, will deliver these sessions. We will be delighted to welcome parents/carers from students attending **any secondary school in Reading**.

The sessions will be delivered twice on the same day:

- **Reading Girls' School (RG2 7PY) at 9.30am**
- **Kendrick School (RG1 5BN) at 6.00pm**

Please use this link if you would like to reserve a place for the session on **Self Harm**:

<https://www.surveymonkey.co.uk/r/B7PTKC5>

Date	Topic
Wednesday 12 th December 2018	Anxiety
Wednesday 30 th January 2019	Depression/Low Mood
Wednesday 27th February 2019	Self Harm
Wednesday 27 th March 2019	Eating Disorders
Wednesday 24 th April 2019	Exam Anxiety
Wednesday 3 rd July 2019	Resilience

(Please note that parking onsite at Kendrick School is very limited and so public transport should be used where possible - we are a 5 minute walk from the Oracle. Parking at Queens Road car park is the nearest but we can accommodate parking for anyone with mobility issues (please contact Reception in advance to arrange this). Please arrive at Reception on East Street for the event.)

Please contact the host schools if you have any queries about these events.



DETERMINATION IN ALL WE DO
RESPECT FOR OTHERS
EXCELLENCE IN OUR WORK
ATTITUDE FOR SUCCESS
MATURITY IN OUR CHOICES

This half term we launched our **DREAM** initiative to help support all the members of our community in developing the right sorts of behaviours and characteristics in lessons and outside. We have been really encouraged by the way that this simple, easy to remember set of statements has been embraced by our

students. These characteristics aren't just for school – they are equally important in the home. So, just as we are actively looking to identify students living the DREAM and to reward this, you might want to think about doing the same at home and reinforcing this powerful message.

TERM DATES

Spring	7 January - 15 February 2019
	25 February - 5 April 2019
Summer	23 April - 24 May 2019 (Bank Holiday 6 May)
	3 June - 24 July 2019
CPD Days	4 July 2019

Facilities Hire



Our fantastic school facilities are available for hire to the general public. Please click on the photo above for details.

Extra-curricular Activities

[Click here to find a list of after school clubs](#)



Click on envelope to view recent communications



Click on the ParentPay logo to login and register your account.

Email queries to:
parentpay@maidenerleghschool.co.uk



Parent App -

Please contact us at
parentapp@maidenerleghschool.co.uk
for support.