



MAIDEN ERLEGH  
SCHOOL IN READING

# Year 8 Parents Information Evening

Thursday 21st September





# So where are we?



# PRIMARY SCHOOL





# YEAR 7





# SUMMER 2023



# Key Staff



- Head Teacher: Mr Graham
- Assistant Head Teacher: Ms Hind
- Head of Year 8: Miss Ryan
- DSL: Miss Davies



# Tutor Team

8G1 : Dr Davies & Mrs Allsop

8G2: Mr Tomsett

8P1: Mr Hibbins

8P2: Mrs Edwards & Mrs Riaz

8T1: Ms Bruna

8T2: Ms Jordan & Ms Amin



# Respect





MAIDEN ERLEGH  
SCHOOL IN READING

# THE MER WAY

Opportunity Diversity Success



## READY

- We are on time for school and all of our lessons
- We come to school with the correct equipment
- We switch off mobile phones and keep them out of sight
- We wear our uniform with pride; blazer on, shirt tucked in, shoes on and coats off
- We take advantage of opportunities offered through extra curricula activities



## SAFE

- We move around the building calmly, quietly, and promptly
- We use the one-way system and keep to the left on the stairs
- We keep our hands to ourselves
- We use technology responsibly
- We voice our concerns to an adult if something is wrong and look out for one another



## RESPECTFUL

- We are kind, show good manner and use appropriate language
- We follow instructions the first time
- We actively listen to staff and students
- We remain focused in lessons, so not to disturb the learning for others
- We keep our school clean and tidy, putting our litter in the bin



# Living the DREAM!

**D**

DETERMINATION IN ALL WE DO

**R**

RESPECT FOR OTHERS

**E**

EXCELLENCE IN OUR WORK

**A**

ATTITUDE FOR SUCCESS

**M**

MATURITY IN OUR CHOICES

...At Maiden Erleigh School in Reading



# Enrichment

Mr Hibbins – Enrichment Co-ordinator





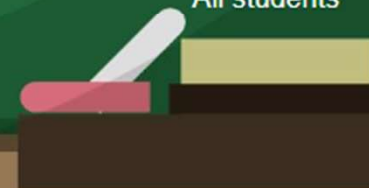
## Monday

What	When	Where	Who
Recreational Basketball club	Lunchtime	Sports Hall	Year 7, 9 & 11
Basketball Club (Reading Rockets)	3:15 - 4:15	Sports Hall	Year 10 & 11
Teen Tech DT Club	3:15 - 4:15 (Starts 25th September)	235/241	KS4





Tuesday				
What	When	Where	Who	
Recreational Basketball club	Lunchtime	Sports Hall	Year 7, 9 & 11	
Boys Rugby	3:15 - 4:15	Field	Year 7 Boys	
Singing club	Lunchtime	Music	Year 7	
Girls Football	3:15 - 4:15	Field	Year 11 Girls	
Maths Homework club	3:15 - 4:15	119	All students	
Debate club	3:15 - 4:15	107	All students	
Dungeons & Dragons	3:15 - 4:15	206	All students	
Open access photography	3:15 - 4:15	235	KS4 Students	
KS4 Art & photography Booster	3:15 - 4:15	206 & 207	KS4 Art & photography students	
English drop-in clinic	3:15 - 4:15	108	All students	
Homework club	3:15 - 4:15	21B	All students	







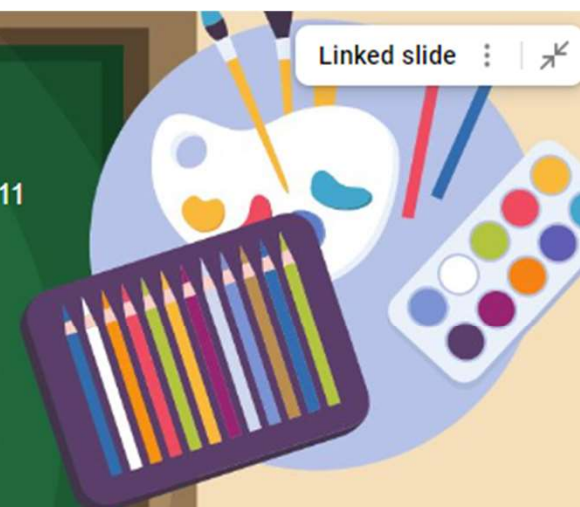
Wednesday

What	When	Where	Who
Recreational Basketball club	Lunchtime	Sports Hall	Year 8 & 10
GCSE History revision	3:15 - 4:15	205	Year 9, 10 & 11
Boys Rugby	3:15 - 4:15	Field	Year 8
Maths Homework Club	3:15-4:15	119	All students
School Band	3:15 - 3:45	Music	All students
KS4 Art & Photography booster	3:15-4:15	206 & 207	KS4 Art & Photography students
Homework club	3:15 - 4:15	21B	All students
Art workshop (Week 2)	3:15 - 4:15	206	All students and staff
EAL English support (Invite only)	3:15 - 4:15	113	Invited students





Thursday				
What	When	Where	Who	
Recreational Basketball Club	Lunchtime	Sports Hall	Year 7, 9 & 11	
Girls Football	3:15 - 4:15	Field	Year 8 & 9	
Maths Homework club	3:15 - 4:15	119	All students	
Singing	3:15 - 3:45	Music	All students	
Dungeons and Dragons	3:15 - 3:45	206	All students	
Art & Photography booster	3:15 - 4:15	206 & 207	KS4 students	
Reading ambassador & Library club (Week 1)	3:15 - 4:15	111	All students	
Homework club	3:15 - 4:15	21B	All students	
Badminton Club	3:15 - 4:15	Sports Hall	KS4 students	
Combined Cadet Forces	3:15 - 5:00	MUGA	CCF Students	








MAIDEN ERLEGH  
SCHOOL IN READING

# School Information



# Locker

Please ensure you have paid for the locker hire on Parent Pay Shop.



**Annual locker hire**

Use of school locker for the relevant academic year and cleaning at end of hire period

Option

2022-2023 - £7.00

**In stock**

- 1 +

Total price: **£7.00**

**Add to basket**



# School Uniform

We are proud to be MER and correct uniform is essential including the PE Kit.

Please label all uniform with your son/daughters name.

All their uniform, equipment and books are their responsibility. They need to make sure they are checking they have all their belongings.

Purchased from Stevensons in Reading

website: [www.stevensons.co.uk](http://www.stevensons.co.uk)



Stevensons

School Uniforms | Sportswear | Sports Equipment





## School Uniform

Please help us to maintain our high standards:

- School shoes not trainers
- A single pair of plain studs
- Smart and tidy hair in a natural colour
- Must have a blazer, jumpers are optional





**MAIDEN ERLEGH**  
SCHOOL IN READING



### Teacher /parent contact

- Phone calls
- Progress meetings

Google  
Classroom



Google  
Classroom

Classcharts



How do we  
communicate  
with you?

Bromcom  
email/messaging

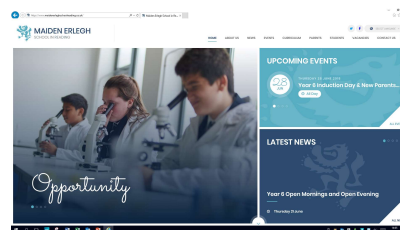


Website:

[www.maidenerleghschoolreading.co.uk](http://www.maidenerleghschoolreading.co.uk)



Twitter: @MESReading







# How can you support your child?

- Provide a study space
- Encourage good habits
- Punctual to school
- Encouraging resilience
- Independence
- Working as a team



# Attendance

- School success starts with attendance. Every school day counts!
- On occasions when your child is absent we ask that you contact us either via email on [MERoffice@maidenerleghtrust.org](mailto:MERoffice@maidenerleghtrust.org) or telephone: 0118 966 8065 by 9am.



# Medical Appointments

We ask that all medical appointments are booked outside of school hours where possible.

We do understand that may not always be the case.

Please send an email to [meroffice@maidenerleghtrust.org](mailto:meroffice@maidenerleghtrust.org) with the evidence of medical appointment (email of appointment or photo of letter) at least 24hrs before the day of the appointment.



# ParentPay and Parent Pay Shop

- “Cashless school”
- Payments for school lunches/ trips/ equipment/lockers etc.
- You will have received an email instructing you how to set up your account.
- Please email any queries to the school office  
[MERoffice@maidenerleghtrust.org](mailto:MERoffice@maidenerleghtrust.org)



# Updating Information

It is so important we have the correct contact information for you.

This is phone numbers and email addresses.

If you need to update us, please come into reception or email reception on [meroffice@maidenerleghtrust.org](mailto:meroffice@maidenerleghtrust.org) to update us.



# Letters Home

All communication from the school will be sent on a WEDNESDAY.

Letters are sent to your email address and can be found in the parents section of the website.

*Please check that the school emails are not going in your junk folder!*



# Communication

It is so important we have a good level of communication.

If you have any questions, worries or need to contact us please email reception.

[meroffice@maidenerleghtrust.org](mailto:meroffice@maidenerleghtrust.org)

Please ensure you put your son/daughters name, tutor group and who you would like the email to go to

We will then get back in touch with you within 72 hours.



# Who do I speak to if I need support?

1. Tutor – can help in the first instance or point you in the right direction
2. Curriculum Leader/ Head of Year 8
3. Safeguarding – Assistant Headteacher, Miss Davies





# Wrap Around Support

Breakfast Club & Homework Club.

- Breakfast Club £35 per term – includes food and drink.  
8.00 – 8.30am every day.
- Homework Club on Monday to Thursday every week  
until 4pm.



# Assessment Changes from September 2023



# Data Collection Point (DCP)

- There are three DCP's throughout the academic year for year 8
- This is a report given to all pupils regarding their process and behaviour for learning in each of their subjects
- These allow students to review each term and create achievable goals for the next term



# KS3 – Point in Time Assessment (PITA)

Learning is assessed against the curriculum which has been taught up to that date





# KS3 – PITA

**EXPECTATION** – All children should be at least **Deepening** by the end of the Key Stage 3.

Description	Definition
<b>Excelling</b>	Your child has demonstrated knowledge and understanding well beyond the age-appropriate subject curriculum and associated skills.
<b>Deepening</b>	Your child has a deepening knowledge and understanding of the age-appropriate subject curriculum and associated skills.
<b>Securing</b>	Your child has a secure knowledge and understanding of the age-appropriate subject curriculum and associated skills.
<b>Beginning</b>	Your child is beginning to work towards the age-appropriate knowledge and understanding of the subject curriculum and associated skills.

This will be recorded on Bromcom and communicated home to parents and students.

# GCSE Options



MAIDEN ERLEIGH  
SCHOOL IN READING

- From September 2024, we will move to a three-year Key Stage 3
- Year 8, will choose their GCSE options in the spring term of Year 9
- They will start their GCSEs in Year 10.



# Respect

Year 8

Total DREAM points

9698

Respect points

1137